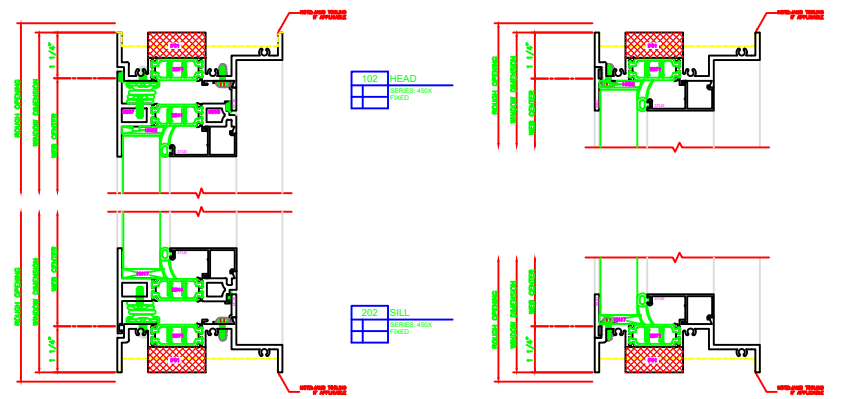
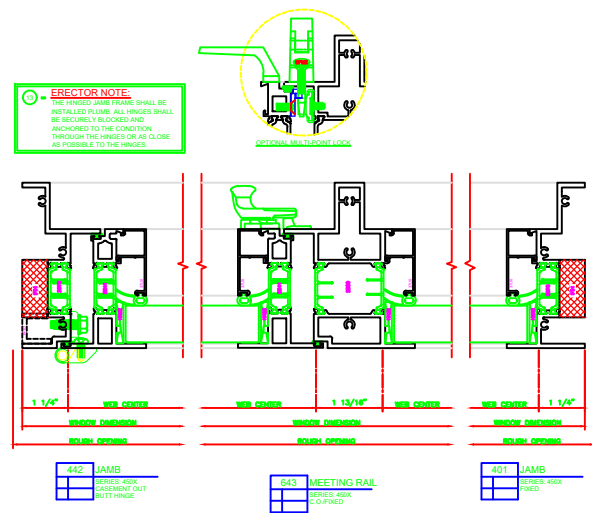


- 142 HEAD  
SERIES 400K  
CASEMENT OUT  
4-BAR ARMS
- 242 SILL  
SERIES 400K  
CASEMENT OUT  
4-BAR ARMS
- 440 JAMB  
SERIES 400K  
CASEMENT OUT  
4-BAR ARMS
- 643 MEETING RAIL  
SERIES 400K  
C-CLIP/FIBER
- 401 JAMB  
SERIES 400K  
FIXED



4-BAR ARMS  
BUTT HINGE



**ERECTOR NOTE:**  
THE HINGED JAMB FINISH SHALL BE INSTALLED FIRST. ALL HINGES SHALL BE SECURELY BLOCKED AND ANCHORED TO THE CONCRETE THROUGH THE HINGES OR AS CLOSE AS POSSIBLE TO THE HINGES.

- 143 HEAD  
SERIES 400K  
CASEMENT OUT  
4-BAR ARMS
- 243 SILL  
SERIES 400K  
CASEMENT OUT  
4-BAR ARMS
- 442 JAMB  
SERIES 400K  
CASEMENT OUT  
BUTT HINGE
- 643 MEETING RAIL  
SERIES 400K  
C-CLIP/FIBER
- 401 JAMB  
SERIES 400K  
FIXED

